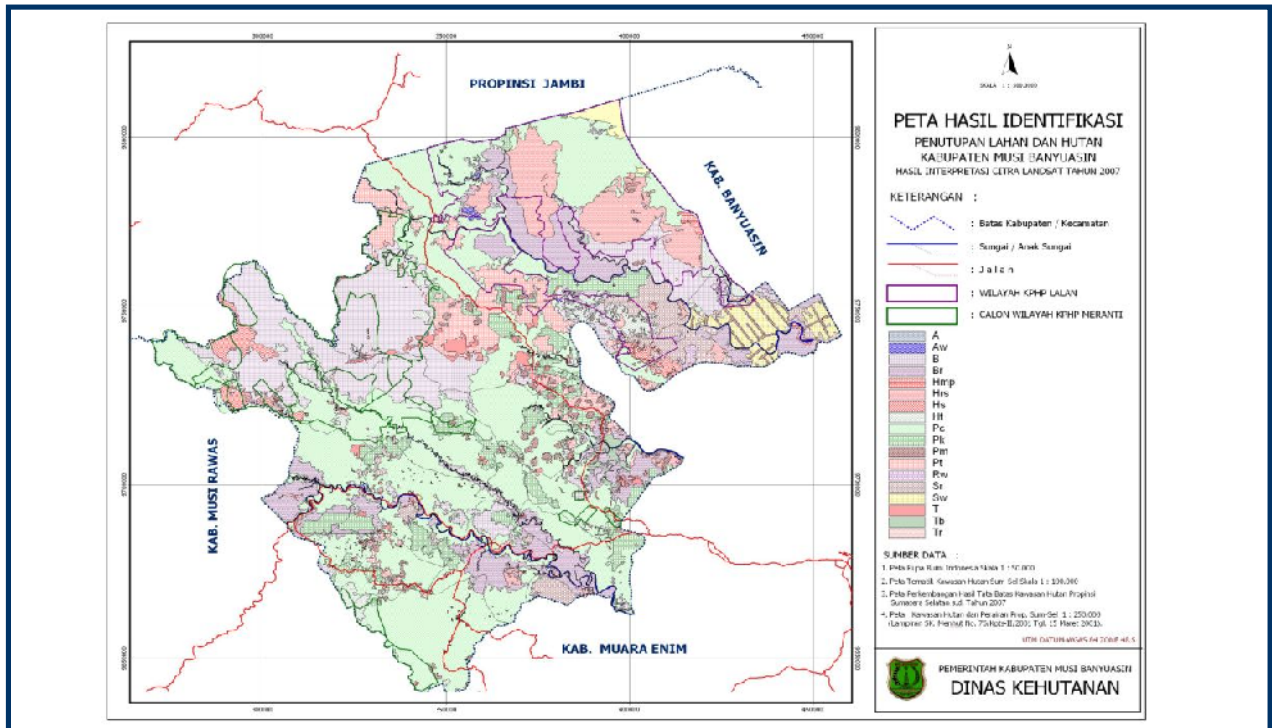


## PETA PENUTUPAN LAHAN DAN HUTAN KABUPATEN MUSI BANYUASIN



## TABEL FUNGSI & LUAS KAWASAN HUTAN KABUPATEN MUSI BANYUASIN

Tutupan Lahan	HP		HPK		HL		HSA		Luas Total	%
	Ha	%	Ha	%	Ha	%	Ha	%		
Air (A)	866	0.2	973	0.5	0	0.0	13	0.0	1.853	0.26
Bayangan (B)	11.631	2.8	3.469	1.6	0	0.0	1.060	1.6	16.164	2.28
Belukar rawa (Br)	40.814	10.0	13.655	6.3	0	0.0	1.026	1.6	55.511	7.83
H. mangrove primer (Hmp)	291	0.1	0	0.0	0	0.0	50	0.1	341	0.05
H. mangrove sekunder (Hms)	991	0.2	0	0.0	0	0.0	165	0.3	1.156	0.16
Hutan rawa sekunder (Hrs)	106.757	26.1	3.417	1.6	0	0.0	0	0.0	110.202	15.54
H. Sekunder (Hs)	68.550	16.7	83.498	38.8	14.262	74.6	24.015	37.1	190.455	26.86
Hutan tanaman (Ht)	11.023	2.7	953	0.4	0	0.0	740	1.1	12.719	1.79
Pertanian campuran (Pc)	125.605	30.7	53.861	25.0	3.016	15.8	28.885	44.6	211.438	29.82
Perkebunan (P)	18.646	4.6	24.982	11.6	0	0.0	6.823	10.5	50.467	7.12
Pemukiman (Pm)	912	0.2	6.994	3.2	0	0.0	239	0.4	8.148	1.15
Pertambangan (Pt)	75	0.0	2.913	1.4	0	0.0	0	0.0	2.989	0.42
Rawa (Rw)	2.146	0.5	3.590	1.7	0	0.0	83	0.1	5.821	0.82
Semak rawa (Sr)	13.951	3.4	0	0.0	0	0.0	0	0.0	13.954	1.97
Sawah (Sw)	387	0.1	0	0.0	0	0.0	0	0.0	387	0.05
Tanah terbuka (T)	5.601	1.4	9.433	4.4	1.833	9.6	1.611	2.5	18.493	2.61
Tambak (Tb)	744	0.2	7.251	3.4	0	0.0	28	0.0	8.027	1.13
Tansmigrasi (Tr)	701	0.2	441	0.2	0	0.0	0	0.0	1.142	0.16

Sumber: Interpretasi citra Landsat tahun 2007. BPKH Wilayah II Palembang